

**S**orentosite.com  
THE KIA SORENTO COMMUNITY  
***Installing Korean Luxury Top Storage Unit***  
***By LXEDITION***

*Tools:*

Phillips Screw Driver  
4 Small screws

*Duration:*

20 to 30 minutes

*The before picture:*



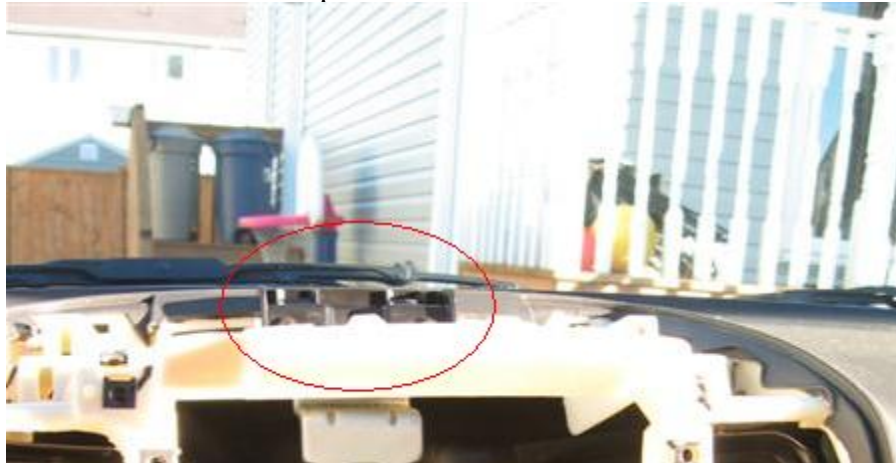
1. Remove the side vents by opening the center storage tray and pulling on the side vents towards the rear of the Sorento they will pop right off:

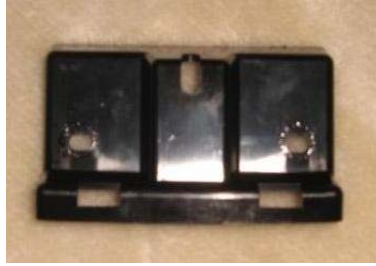


2. Next take your Phillips screw driver and remove all the screws holding in the front fascia and top area, 8 in total should look similar to this I have the Stereo out in this photo:



3. Now remove the black filler piece at the back near the windshield x2 screws.





(this piece)

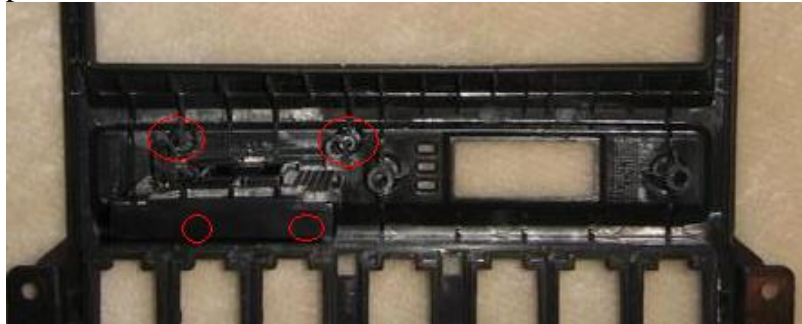
4. Now remove 4 out of the 5 screws in the back of the old fascia they are on the holding on the top portion.



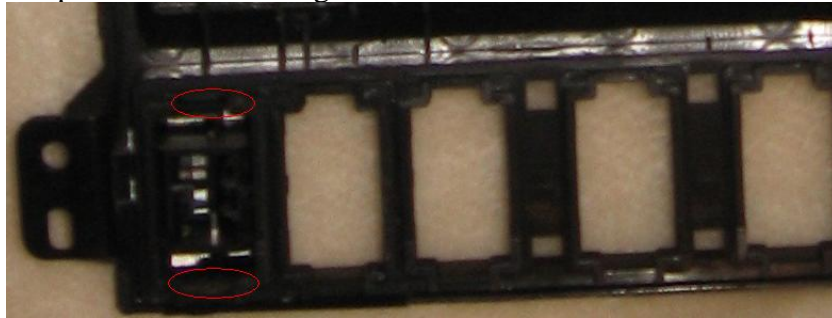
5. Next take the 4 screws and attach the transition piece from the Korean front fascia to the storage unit to the front fascia like so.



6. Now remove the clock from the US Spec unit and fix it to the Korean Front Fascia and now attach the Card slot compartment with the four screws you need to purchase at the local hardware store. I brought the front fascia with me to match up the screws to the holes.



7. Now remove the buttons from the US Spec unit and install them into the Korean Front Fascia they are held in there by pressure clips just squeeze them from the inside and push them out through the front. Install them in the Korean unit.



8. Next you need put the front fascia on and install the screws and then the storage unit and again install the screws...snap the air vents back on and you're done.

